

# PicPac™ Palletizer

An All-In-One Mobile Cobot Palletizer

# \$94,950

Fast 6-Week Delivery

Streamline your end-of-line packaging with a cost effective, collaborative robotic palletizer from Allied Technology.



## UR10e COBOT

10KG (22LB) LOAD CAPACITY  
48" X 40" STANDARD PALLET

## OPERATOR INTERFACE

UNITRONICS PLC AND HMI  
UR CONTROLLER

## MOBILE FRAME

BUILT IN FORKLIFT POCKETS  
RETRACTABLE CASTERS  
MONOBLOCK DESIGN

## EOAT

SINGLE-PICK  
MULTI-PICK  
PIAB VACUUM

## INTEGRATED CONVEYOR

ADJUSTABLE HEIGHT + WIDTH  
BOX SIDE CROWDER  
BOX SUPPLY HOLDBACK

## LIFT COLUMN

LINEAR BEARINGS AND RAILS  
PNEUMATIC ACTUATED  
HEAVY DUTY DESIGN

## Install

- 1 Remove from pallet.
- 2 Roll into place.
- 3 Plug into 115 VAC outlet.
- 4 Run Palletizer.

Install under **1 Hour**  
Changeover in **Minutes**

## Operation

- ▶ Use the **PicPac Pattern Builder** to create simple and complex patterns.
- ▶ **Safely run 15 boxes/min** unguarded or 24 boxes/min with safety upgrade.
- ▶ **Integrated conveyor** guarantees an accurate pick location every time.

## Support

- ▶ **Self-Guided HMI Interface** allows for easy operation and troubleshooting.
- ▶ **Training and Support** is available to help your team get started.
- ▶ **Integration is available** for custom configurations and multiple lines.

## READY-TO-RUN THE DAY IT ARRIVES

The complete one-piece design of the system frame, controls, robot, and conveyor, makes this the best cobot palletizer on the market. The software is easy and guided for simple to complex patterns. Conveyor is integrated so the robot always knows where to pick from. The End of Arm Tool is quick-change and handles box feed rates of up to 24 boxes/minute. The Base Frame has retractable casters so you can roll the robot into place and palletize on any production line at a moment's notice.

## PicPac™ Pattern Builder

- ▶ Easy-to-use graphic interface.
- ▶ Build complex patterns with minimal effort.
- ▶ Guided, step-by-step pattern building.
- ▶ Work remotely and load with a USB device.

## Contact Us Today!

### ADDRESS

2150 West 6th Ave, Suite P  
Broomfield, CO 80020

### PHONE

303.502.7753

### EMAIL

Sales@allied-technology.com

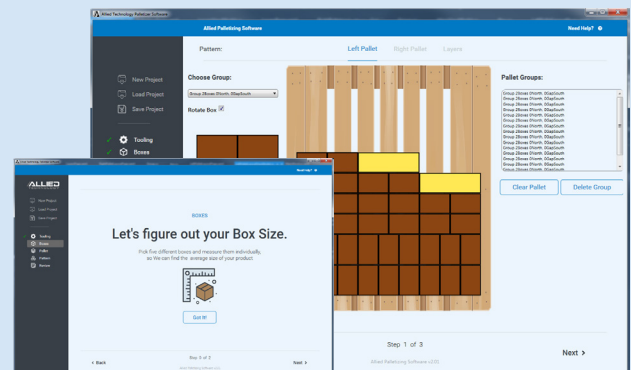
### Website

Allied-Technology.com/Contact



## How To Get Started

- 1 **Send us your sample products** and we will run them with our demo palletizer at no charge.
- 2 Use our **Free ROI Calculator** at [Allied-Technology.com/ROI](http://Allied-Technology.com/ROI) to help justify the palletizer cost.
- 3 **Get in contact** with our engineers to customize the palletizer to best suit your requirements.



## Machine Specifications

|                        |   |
|------------------------|---|
| <b>Box Size</b>        | Minimum 5" x 5" x 3" / Optional Min 3" x 3" x 3"      |
| <b>Pallet Stack</b>    | 48" x 40" x 74" / Optional 48" x 42" x 96"            |
| <b>Cycle Time</b>      | 5-15 Boxes/minute / Optional 8-24 Boxes/minute        |
| <b>Safety</b>          | No Guarding Needed / Optional Area Scanners           |
| <b>Tooling</b>         | Single, Double or Triple Pick EOAT                    |
| <b>Payload</b>         | Up to 22lbs including EOAT                            |
| <b>Lift Column</b>     | Heavy Duty Pneumatic Air Cylinder and Linear Bearings |
| <b>Conveyor</b>        | Adjustable Height and Width (with Fixed Locations)    |
| <b>Mobility</b>        | Retractable Casters and Forklift Pockets              |
| <b>Repeatability</b>   | +/- 0.05"   |
| <b>PLC and HMI</b>     | 15.6" Unitronics Unistream                            |
| <b>Steel Enclosure</b> | NEMA 4 / NEMA 12 / CSA Certified / UL Listed          |
| <b>Pallet Sensors</b>  | Proximity Sensors                                     |
| <b>Power Supply</b>    | 115 VAC @ 15 Amps                                     |
| <b>Air Supply</b>      | 90 psi @ 5 cfm  |